

# ROYSTON & LUND



## Worthing Grove, Tamworth

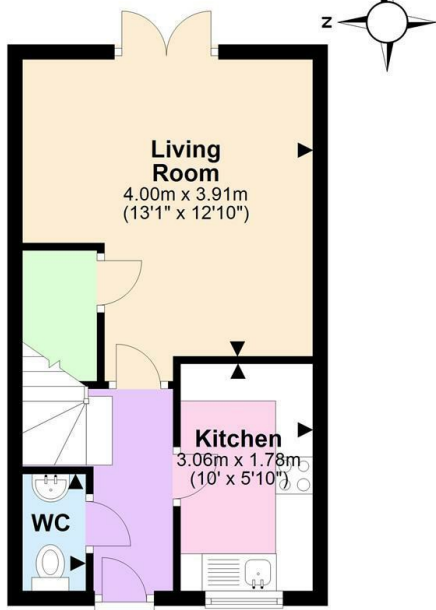
£1,050 PCM

- Spacious living area
- Private garden
- Stylish family bathroom
- Council Tax Band: B
- Well-appointed kitchen
- Two private parking spaces
- Access to local amenities
- Two double bedrooms
- Convenient downstairs toilet
- EPC Rating: B

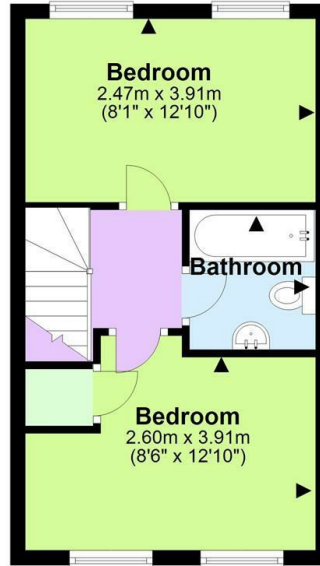
1 Victoria Road, Tamworth, Staffordshire, B79 7HL  
01827 66686

tamworthenquiries@royston-lund.co.uk  
www.royston-lund.co.uk

**Ground Floor**  
Approx. 28.0 sq. metres (301.3 sq. feet)

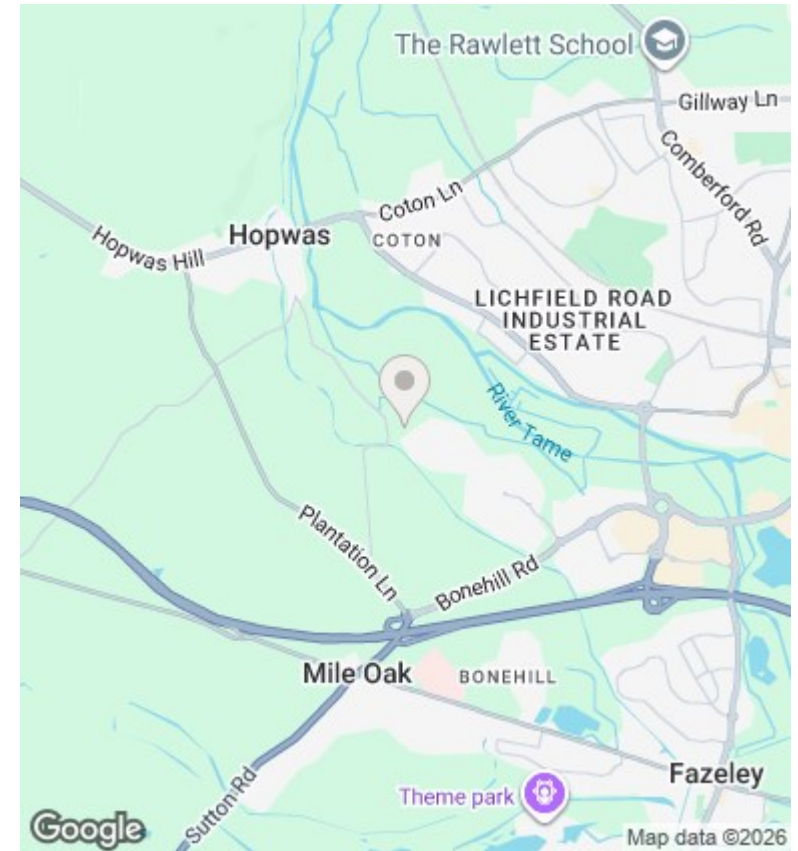


**First Floor**  
Approx. 28.0 sq. metres (301.3 sq. feet)



Total area: approx. 56.0 sq. metres (602.7 sq. feet)

Where every attempt has been made to ensure the accuracy of the floor plan contained here, measurements of doors, windows, rooms and any other items are approximate and no responsibility is taken of any error, omission or mis-statement. This plan is for illustrative purposes only and should be used as such by any prospective purchaser. Plan produced using PlanUp.



**Directions**

**Viewings**

Viewings by arrangement only. Call 01827 66686 to make an appointment.

**Council Tax Band**

B

**EPC Rating:**

B

Energy Efficiency Rating		Current	Potential
Very energy efficient - lower running costs			
(92 plus) <b>A</b>			<b>98</b>
(81-91) <b>B</b>		<b>84</b>	
(69-80) <b>C</b>			
(55-68) <b>D</b>			
(39-54) <b>E</b>			
(21-38) <b>F</b>			
(1-20) <b>G</b>			
Not energy efficient - higher running costs			
<b>England &amp; Wales</b>		EU Directive 2002/91/EC	